

## Ultra Lo-Drift Spray Nozzles

### Drift-Reducing Air-Inclusion Nozzles



Use Ultra Low Drift nozzles when drift reduction is the priority. Enables spraying in the widest weather window. Suitable for spraying soil acting herbicides, glyphosate and systemic fungicides. Not recommended for grass weed herbicides or potato blight fungicides.

### FEATURES & BENEFITS

- Large air-filled droplets with fewer fine droplets to reduce spray drift compared to standard flat fan nozzles
- Reduce potential spray drift where a buffer zone is required such as spraying near to organic or sensitive crops and residential areas
- Wide 120° spray angle means boom height can be lowered to further decrease drift
- Small, compact nozzle size reduces the chance of accidental breakage
- Operates at standard boom pressures
- Two piece design - splits open for easy cleaning
- Available sizes 015 to 08 with ISO standard colours
- Fit all standard caps and Hypro TwinCap™
- Precision moulded in tough and durable polyacetal

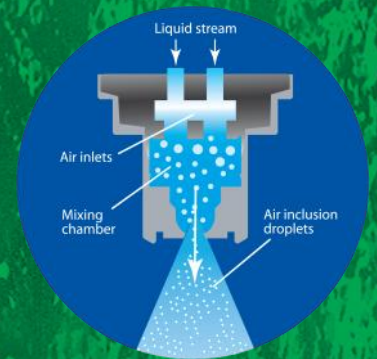


3 sizes approved for spraying field crops:

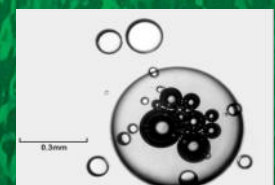
Size 03: 50% drift reduction at 2.5 to 8 bar

Size 04: 90% drift reduction up to 2.5, 75% reduction 3 to 8 bar

Size 05: 90% drift reduction at 2.5 to 8 bar



*Patented dual-air education technology makes coarser air-filled droplets that show good retention on leaf surfaces*



Large air-filled droplets

# Ultra Lo-Drift 120° Nozzles

## SPECIFICATIONS

### Performance information

Part Number: ULD120-015

Nozzle	Bar	Flow	Litres/hectare @ Km/h							Spray Quality
		L/min	6	8	10	12	14	16	18	
015	1	0.346	69	52	42	35	30	26	23	V. Coarse
	2	0.490	98	73	59	49	42	37	33	Coarse
	3	0.600	120	90	72	60	51	45	40	Coarse
	4	0.693	139	104	83	69	59	52	46	Medium
	5	0.775	155	116	93	77	66	58	52	Medium
	6	0.849	170	127	102	85	73	64	57	Medium
	7	0.917	183	137	110	92	79	69	61	Fine
	8	0.980	196	147	118	98	84	73	65	Fine

Part Number: ULD120-02

Nozzle	Bar	Flow	Litres/hectare @ Km/h							Spray Quality
		L/min	6	8	10	12	14	16	18	
02	1	0.462	92	69	55	46	40	35	31	V. Coarse
	2	0.653	131	98	78	65	56	49	44	Coarse
	3	0.800	160	120	96	80	69	60	53	Coarse
	4	0.924	185	139	111	92	79	69	62	Coarse
	5	1.033	207	155	124	103	89	77	69	Medium
	6	1.131	226	170	136	113	97	85	75	Medium
	7	1.222	244	183	147	122	105	92	81	Medium
	8	1.306	261	196	157	131	112	98	87	Fine

Part Number: ULD120-025

Nozzle	Bar	Flow	Litres/hectare @ Km/h							Spray Quality
		L/min	6	8	10	12	14	16	18	
025	1	0.577	115	87	69	58	49	43	38	V. Coarse
	2	0.816	163	122	98	82	70	61	54	Coarse
	3	1.000	200	150	120	100	86	75	67	Coarse
	4	1.155	231	173	139	115	99	87	77	Coarse
	5	1.291	258	194	155	129	111	97	86	Medium
	6	1.414	283	212	170	141	121	106	94	Medium
	7	1.528	306	229	183	153	131	115	102	Medium
	8	1.633	327	245	196	163	140	122	109	Medium

Part Number: EULD120-03

JKI Approved with 50% Drift Reduction at 2.5 to 8 Bar

Nozzle	Bar	Flow	Litres/hectare @ Km/h							Spray Quality
		L/min	6	8	10	12	14	16	18	
03	1	0.693	139	104	83	69	59	52	46	V. Coarse
	2	0.980	196	147	118	98	84	73	65	V. Coarse
	3	1.200	240	180	144	120	103	90	80	Coarse
	4	1.386	277	208	166	139	119	104	92	Coarse
	5	1.549	310	232	186	155	133	116	103	Coarse
	6	1.697	339	255	204	170	145	127	113	Medium
	7	1.833	367	275	220	183	157	137	122	Medium
	8	1.960	392	294	235	196	168	147	131	Medium

Part Number: EULD120-04

JKI Approved with 75% Drift Reduction at 2.5 to 8 Bar

Nozzle	Bar	Flow	Litres/hectare @ Km/h							Spray Quality
		L/min	6	8	10	12	14	16	18	
04	1	0.924	185	139	111	92	79	69	62	V. Coarse
	2	1.306	261	196	157	131	112	98	87	V. Coarse
	3	1.600	320	240	192	160	137	120	107	V. Coarse
	4	1.848	370	277	222	185	158	139	123	V. Coarse
	5	2.066	413	310	248	207	177	155	138	V. Coarse
	6	2.263	453	339	272	226	194	170	151	V. Coarse
	7	2.444	489	367	293	244	209	183	163	Coarse
	8	2.613	523	392	314	261	224	196	174	Coarse

Part Number: EULD120-05

JKI Approved with 90% Drift Reduction at 2.5 to 8 Bar

Nozzle	Bar	Flow	Litres/hectare @ Km/h							Spray Quality
		L/min	6	8	10	12	14	16	18	
05	1	1.155	231	173	139	115	99	87	77	V. Coarse
	2	1.633	327	245	196	163	140	122	109	V. Coarse
	3	2.000	400	300	240	200	171	150	133	V. Coarse
	4	2.309	462	346	277	231	198	173	154	V. Coarse
	5	2.582	516	387	310	258	221	194	172	V. Coarse
	6	2.828	566	424	339	283	242	212	189	Coarse
	7	3.055	611	458	367	306	262	229	204	Coarse
	8	3.266	653	490	392	327	280	245	218	Coarse

Part Number: ULD120-06

Nozzle	Bar	Flow	Litres/hectare @ Km/h							Spray Quality
		L/min	6	8	10	12	14	16	18	
06	1	1.386	277	208	166	139	119	104	92	V. Coarse
	2	1.960	392	294	235	196	168	147	131	V. Coarse
	3	2.400	480	360	288	240	206	180	160	V. Coarse
	4	2.771	554	416	333	277	238	208	185	V. Coarse
	5	3.098	620	465	372	310	266	232	207	Coarse
	6	3.394	679	509	407	339	291	255	226	Coarse
	7	3.666	733	550	440	367	314	275	244	Coarse
	8	3.919	784	588	470	392	336	294	261	Medium

Part Number: ULD120-08

Nozzle	Bar	Flow	Litres/hectare @ Km/h							Spray Quality
		L/min	6	8	10	12	14	16	18	
08	1	1.848	370	277	222	185	158	139	123	V. Coarse
	2	2.613	523	392	314	261	224	196	174	V. Coarse
	3	3.200	640	480	384	320	274	240	213	V. Coarse
	4	3.695	739	554	443	370	317	277	246	V. Coarse
	5	4.131	826	620	496	413	354	310	275	Coarse
	6	4.525	905	679	543	453	388	339	302	Coarse
	7	4.888	978	733	587	489	419	367	326	Coarse
	8	5.226	1045	784	627	523	448	392	348	Medium

Application rates shown at 3 bar and 50 cm nozzle spacing

To order use part numbers shown



3 sizes approved for spraying field crops:

Size 03: 50% drift reduction at 2.5 to 8 bar

Size 04: 90% drift reduction up to 2.5, 75% reduction 3 to 8 bar

Size 05: 90% drift reduction at 2.5 to 8 bar

**Hypro EU Limited**  
 Station Road, Longstanton, Cambridge, CB24 3DS, UK  
 Tel: +44 (0) 1954 260097 Fax +44 (0) 1954 260245  
 E-mail: sales@hypro-eu.com  
 www.hypro-eu.com

